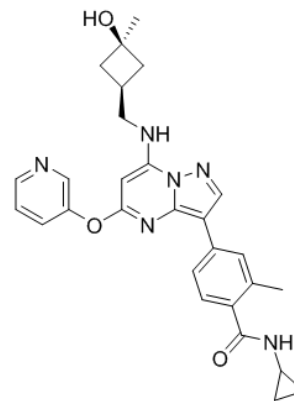


Product Name : CFI-402257
Cat. No. : PC-42354
CAS No. : 1610759-22-2
Molecular Formula : C₂₈H₃₀N₆O₃
Molecular Weight : 498.58
Target : Monopolar Spindle 1 (Mps1/TTK)
Solubility : DMSO: 10 mM (Need Warming and Ultrasonic)



Biological Activity

CFI-402257 (CFI 402257) is a potent and selective **Mps1**/TTK kinase inhibitor with K_i of 0.1 nM and cellular Mps1 EC₅₀ of 6.5 nM.

CFI-402257 exhibits effects consistent with Mps1 kinase inhibition, specifically SAC inactivation, leading to chromosome missegregation, aneuploidy, and ultimately cell death.

CFI-402257 is well-tolerated in mouse models of human cancer and orally active.

References

Mason JM, et al. *Proc Natl Acad Sci U S A*. 2017 Mar 21;114(12):3127-3132.

Liu Y, et al. *ACS Med Chem Lett*. 2016 May 6;7(7):671-5.

Caution: Product has not been fully validated for medical applications. Lab Use Only!

E-mail: tech@probechem.com